



Industrial Washer-extractors

X	22	35	43
XS	22	35	43

HIGH SPIN, RIGID MOUNTED



PRIMUS INDUSTRIAL WASHER-EXTRACTORS, SYNONYMS FOR



SOAP TANKS AND LIQUID SOAP CONNECTIONS

The stainless steel soap dispenser consists of **4 or 5 removable compartments**. The soap is added to the washing water at the bottom of the tub at the right moment during the washing cycle. **This prevents direct contact with the linen** and avoids damage of the linen. The water for cool down is added in the same way. This **avoids 'thermic shock'**, the main cause of shrinking.

The water supply stops immediately when the soap tank is opened. The machine can be provided with **liquid soap connections**.

LARGE DOOR OPENING

Exceptionally **large door opening opens 180°**, ensures easy loading and unloading.



DRUM

The **large diameter** and the **4 extra lifting ribs**, allow better dropping actions for a **cleaner wash**, with **less crumpling of permanent press fabrics**.

Drum and tub are made of **premium quality stainless steel AISI 304**.

SPRAY RINSE

The frontal spray injection through the door creates **the centrifugal force** during extraction, which actually pulls the sprayed water through the fabric, thus providing a **cleaner and faster rinse action and reduced water consumption**.

THERMIC COOLDOWN

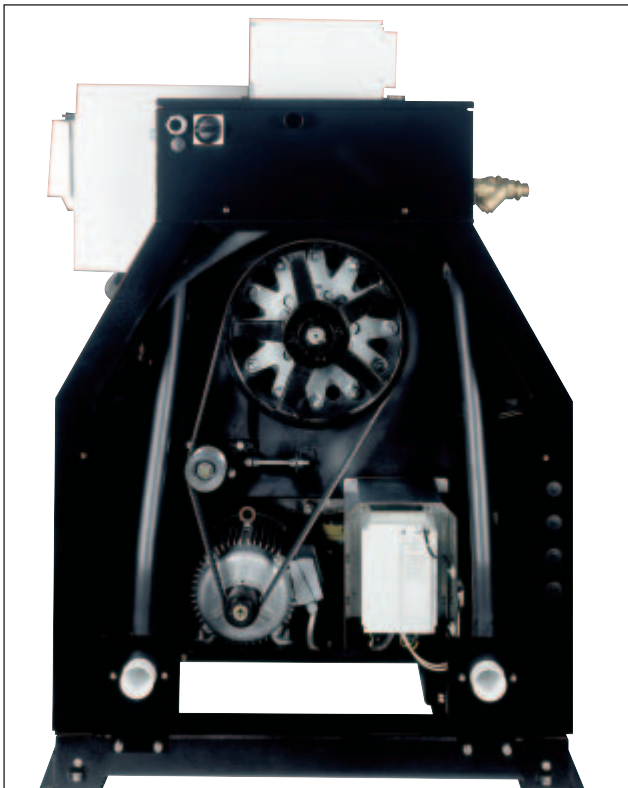
Helps to prevent wrinkling in permanent press fabrics, by allowing a gradual cooldown, when required. This is done by injecting cold water in controlled volume, from the bottom of the drum. Fabrics can be slowly cooled from any washing temperature, without "thermal shock" to the fabric.

EFFICIENT DRAIN AND WATERRECYCLING

Two large drain valves (3"/76mm) on X35 and X43 ensure a **very fast draining and a shorter cycle**. The drain valves are mounted close to the drum. This **avoids spilling of water and soap**, that would sink in the drain tube between the drum and the drain valve. The second drain valve can be used for **waterrecycling**. In this way, the water of the last rinse can be used for the next prewash.

LARGE INLET VALVES (with X35 and X43)

The **three standard large inlet valves (1")** ensures short cycle times and can be used for **waterrecovery systems**.



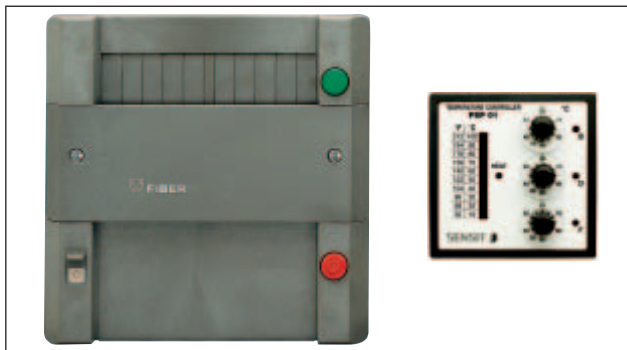
Total weight X/XS22 : 719 kg
Total weight X/XS35 : 939 kg
Total weight X/XS43 : 970 kg

QUALITY, ROBUSTNESS AND RELIABILITY



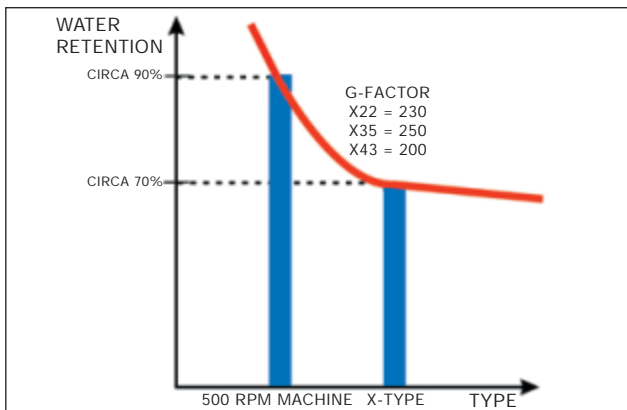
FC - MICROPROCESSOR (standard)

- **Freely programmable microprocessor** that meets the most complex of requirements: washing time, temperature, freely set water levels, number of rinses and spins, liquid soap-pump control, water recovery, etc.
- Up to 99 washing cycles available.
- The microprocessor **can be programmed very easily just by answering the questions** that appear on the display of the microprocessor.
- The **two-line display, in your own language**, shows the progress of the programme.
- Possibility of changing **the water level, temperature, washing and spin times, etc. during the programme.**
- The microprocessor also has a **diagnosis system** that signals and describes faults, this **saves time with maintenance.**
- Via a PC connection and a network connection, programmes can be modified and washing processes can be managed with several machines at the same time.



CARD PROGRAMMER (optional)

- A **wide choice of programming options**: time, temperature, water level, cooling, soap dosing, etc.
- Possibility of composing **your own precise and efficient card programmes** according to your individual requirements.
- **Thermostat-thermometer with 3 presettable temperatures** where one can read off the temperature at any time.
- A buzzer signals the end of the programme.



MOTORS AND HIGH G-FORCE

A rugged but simple two motor drive (only for X-machines) offers **4 speeds** and an **efficient final extraction**.

40 rpm washing with reversing wash action

70 rpm start spinning to obtain an optimum distribution of the linen and when extracting delicate fabrics such as woollens.

315 tot 375 rpm : intermediate spin

620 tot 750 rpm : final spin at high speed

The X-machines combine the advantages of a **service-friendly rigid mounted machine with a high G-factor**. This results in a **cost-saving operation** : shorter drying time, low maintenance costs.



MOTOR PROTECTION

Internal (in motor) and external (on contactor) **thermal motor protection**.

OUT-OF-BALANCE DEVICE

In case of an out-of-balance, the extraction will be stopped at once, and the linen will be redistributed before restarting. Only after 3 unsuccessful attempts will the programme continue.

FRAME

The heavy duty cast iron frame provides rigid support for the drum and reduces vibration during operation.

The washing machine has an **extremely strong construction** (net weight X/XS22 : 719 kg, X/XS35 : 939 kg and the X/XS43 : 970 kg), ensuring a **long life**.